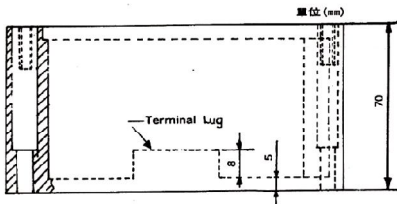
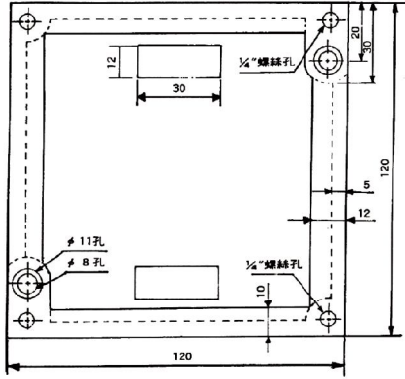
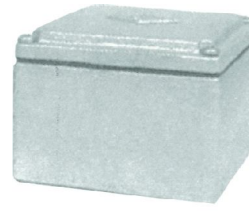




雙連式出線盒

Junction Boxes

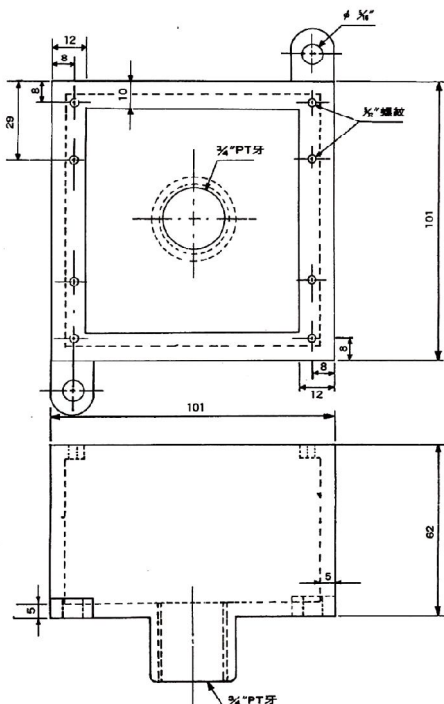
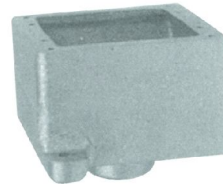


型號 Catalog Number	外部尺寸 Outside Dimensions	材質 Standard Material
FD121207	120L X 120W X 70H	鑄鐵 Cast Iron
FD121207-D	120L X 120W X 70H	延性鑄鐵 Ductile Iron
FD121207-A	120L X 120W X 70H	鋁合金 Aluminum Alloy

標準附件：包括蓋板、防水墊片及螺絲。
 表面處理：鑄鐵類 電鍍鋅；鋁合金 噴漆。
 （另可提供熱浸鍍鋅及熱噴鋅表面處理）
 注意事項：請於訂購前，提供出線的位置及口徑之簡圖，以利開孔加工。

FEATURES :

- Furnished with cover, jacket and screws.
- Suitable for use in wet locations.
- Zinc plated of type FD and FD-D ; Enamel painted of type FD-A
- Optional Finish : Hot Dip Galvanized or Zinc Thermospray are available.
- Please provide the Drawing of outlets diameter and position before ordering.



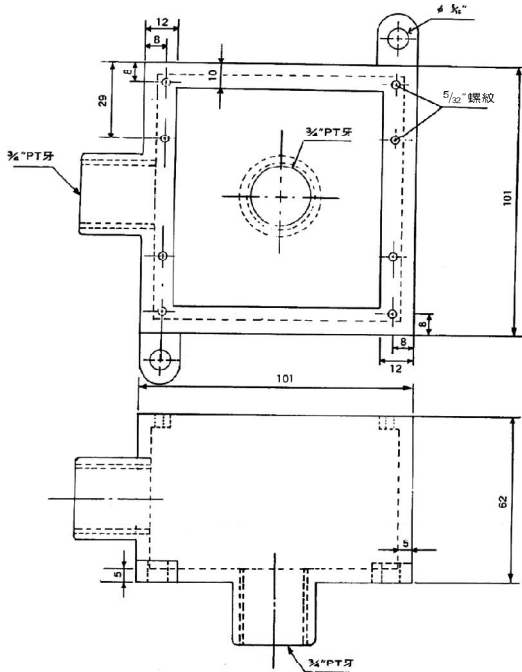
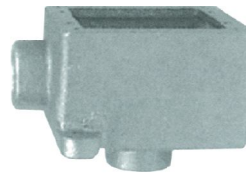
型號 Catalog Number	外部尺寸 Outside Dimensions	材質 Standard Material
FDG101006	101L X 101W X 62H	鑄鐵 Cast Iron
FDG101006-D	101L X 101W X 62H	延性鑄鐵 Ductile Iron
FDG101006-A	101L X 101W X 62H	鋁合金 Aluminum Alloy

表面處理：鑄鐵類 電鍍鋅；鋁合金 噴漆。
 （另可提供熱浸鍍鋅及熱噴鋅表面處理）
 出線口：3/4" 一孔，螺紋為BSPT或NPT牙。

FEATURES :

- With mounting lugs but without cover.
- Zinc plated of type FDG and FDG-D ; Enamel painted of type FDG-A
- Optional Finish : Hot Dip Galvanized or Zinc Thermospray are available.
- Please refer to the drawing of threaded hubs.



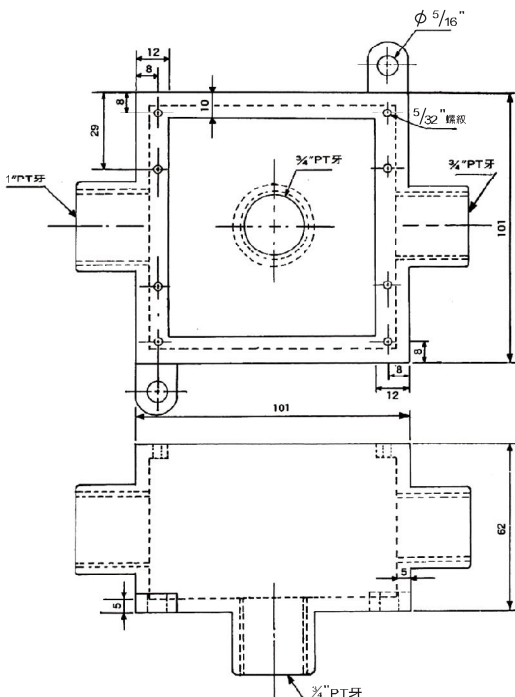
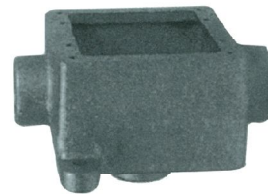


型號 Catalog Number	外部尺寸 Outside Dimensions	材質 Standard Material
FDLB101006	101L X 101W X 62H	鑄鐵 Cast Iron
FDLB101006-D	101L X 101W X 62H	延性鑄鐵 Ductile Iron
FDLB101006-A	101L X 101W X 62H	鋁合金 Aluminum Alloy

表面處理：鑄鐵類 電鍍鋅；鋁合金 噴漆。
 （另可提供熱浸鍍鋅及熱噴鋅表面處理）
 出線口：3/4" 一孔，螺紋為BSPT或NPT牙。

FEATURES :

- With mounting lugs but without cover.
- Zinc plated of type FDLB and FDLB-D ; Enamel painted of type FDLB-A
- Optional Finish : Hot Dip Galvanized or Zinc Thermospray are available.
- Please refer to the drawing of threaded hubs.



型號 Catalog Number	外部尺寸 Outside Dimensions	材質 Standard Material
FDT101006	101L X 101W X 62H	鑄鐵 Cast Iron
FDT101006-D	101L X 101W X 62H	延性鑄鐵 Ductile Iron
FDT101006-A	101L X 101W X 62H	鋁合金 Aluminum Alloy

表面處理：鑄鐵類 電鍍鋅；鋁合金 噴漆。
 （另可提供熱浸鍍鋅及熱噴鋅表面處理）
 出線口：3/4" 一孔，螺紋為BSPT或NPT牙。

FEATURES :

- With mounting lugs but without cover.
- Zinc plated of type FDT and FDT-D ; Enamel painted of type FDT-A
- Optional Finish : Hot Dip Galvanized or Zinc Thermospray are available.
- Please refer to the drawing of threaded hubs.